

LEDCHAN240OL

Wide Shallow Surface Mounted 23.5mm x 10.9mm Aluminium Profile

PRODUCT OVERVIEW

LEDCHAN240 is a shallow surface mount profile ideal for toe kicks, cabinetry, pergolas, and a wide range of applications. Its width accommodates interior and exterior rated LED strips, delivering clean, uniform illumination while maintaining a discreet architectural presence. The slim form factor makes this suitable for both functional and decorative lighting in residential and commercial environments.

PRODUCT INFORMATION

PROFILE CODE

LEDCHAN240OL

DIFFUSER

OPAL

ALUMINIUM GRADE

6063

STOCKED LENGTH

4000mm or cut to size

FINISH

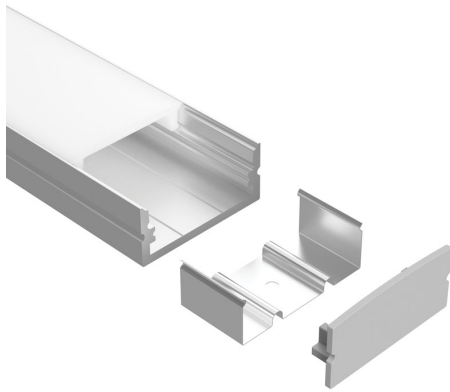
SILVER

DIFFUSER MATERIAL

ACRYLIC

MOUNTING TYPE

SURFACE



DIMENSION DRAWING (MM)



ACCESSORIES

END CAP WITHOUT CABLE HOLE

Code: LEDCHAN240EC1

END CAP WITH CABLE HOLE

Code: LEDCHAN240EC2

MOUNTING CLIPS + SCREWS

Code: LEDCHANMC4