

## LumiFlex LED Neon 300-380 Series



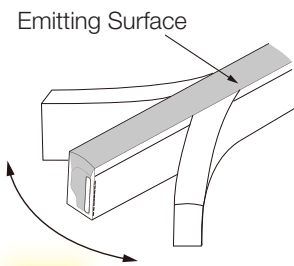
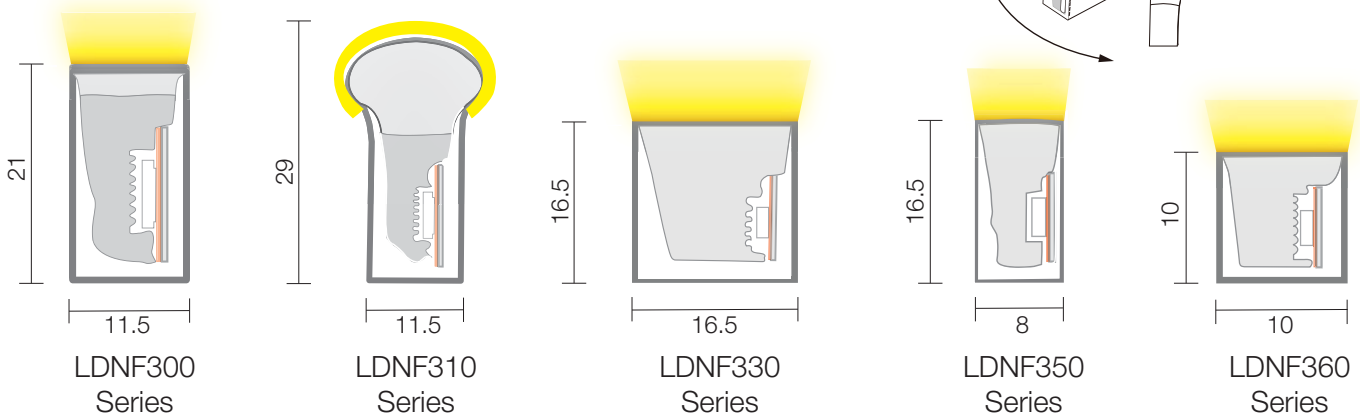
LumiFlex LED neon provides a customised solution to replacing old neon signage and exterior decoration.

Installation is made simple with a large range of end connection types and installation accessories.

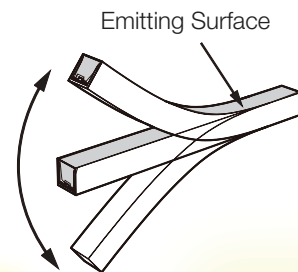
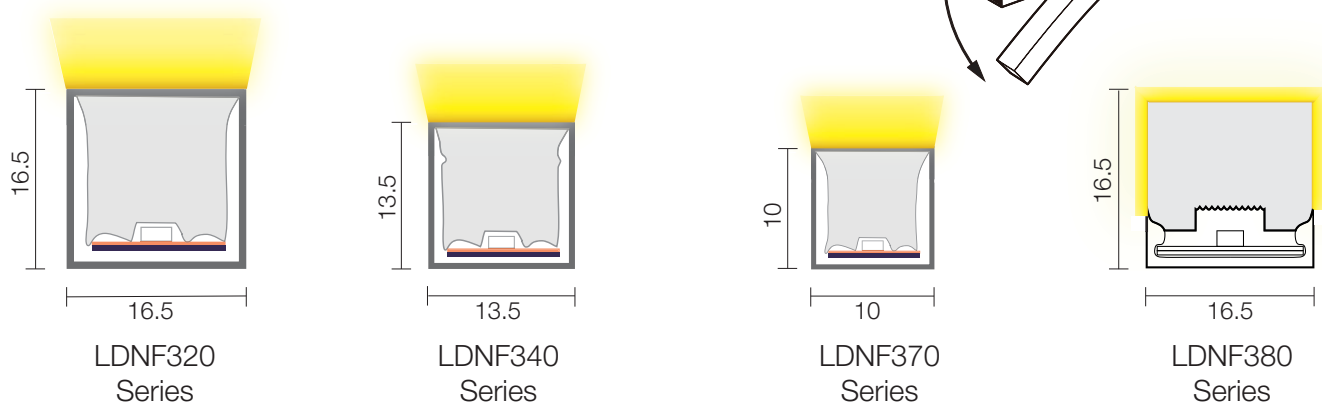
IP68 and high UV protection ratings, LumiFlex is backed by a standard 3 year warranty and a conditional 5 year warranty.

LumiFlex offers a wide range of sizes, watts/m, white CCT, colours and pixel chasing options.

### Side View (Horizontal Bend)



### Top View (Vertical Bend)

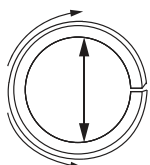


# Options

Type	Volts	W /m	LED /m	LED Type	Colour	Mode	Cut Point (mm)	Max Run Single Feed	Pixel /m	Availability by Series										
										300	310	320	330	340	350	360	370	380		
										Dimensions (mm)										
										11.5x 21	11.5x 29	16.5x 16.5	16.5x 16.5	13.5x 13.5	8x 16.6	10x 10	10x 10	16.5x 16.5		
Mono Colour	12	5	72	3528	Mono	CV	83.3	7m	N/A	√	√									
	24	5	72	3528	Mono	CV	166.7	15m		√	√									
	24	5	70	2835	Mono	CV	100	10m							√					
	24	9	120	3528	Mono	CV	100	10m				√								√
	24	7.2	60	5050	R,O,A	CV	166.7	15m		√	√									
	24	10	72	3528	Mono	CV (IC)	83.3	15m		√	√									
	24	10	120	3528	Mono	CV (IC)	50	15m				√								√
	24	10	144	3528	Mono	CV	83.3	10m				√								√
	24	10	120	2835	Mono	CV	100	5m									√	√		
	24	10	144	2835	Mono	CV	83.3	10m						√						
	24	10	120	2835	Mono	CV	100	10m				√	√		√					
	24	12	60	5050	Mono	CV	100	10m		√	√									
	24	13	72	5050	Mono	CV	27.7	10m		√	√									√
	24	15	84	5050	Mono	CV	83.3	8m		√	√	√								√
	48	5	84	2835	Mono	CV (IC)	166.7	50m							√					
	48	9	140	3528	Mono	CV	100	20m				√								√
48	10	60	5050	Mono	CV	250	20m	√	√											
Dual White	24	12	120	2835	DW	CV	100	10m	√	√	√	√							√	
Dim to Warm	24	12	120	2835	1800K-3000K	DTW	100	10m	√	√	√								√	
	24	12	60	5050	RGB	CV	100	10m	√	√										
	24	13	72	5050	RGB	CV	83.3	10m	√	√	√								√	
	24	13	84	3535	RGB	CV	83.3	5					√	√						
	48	10	60	5050	RGB	CV	250	20m	√	√										
RGBW (PWM)	12	17	60	5050	RGBW	CV	50	5m	√	√										
	24	17	60	5050	RGBW	CV	100	8m	√	√										
	24	17	72	5050	RGBW	CV	83.3	8m	√	√	√								√	
SPI Pixel Chasing	24	15	70	5050	RGB	SPI 8903	100	8m	10	√	√	√							√	
	24	15	70	5050	RGB	SPI 8903	125	8m	10	√	√								√	
	24	15	56	5050	RGBW	SPI 8904	125	8m	8	√	√									
	24	15	70	5050	3000K	SPI 8903	100	8m	10	√	√	√							√	
	24	15	70	5050	DW	SPI 8903	100	8m	10	√	√	√							√	
	24	18	70	5050	RGBW	SPI 8904	125	8m	8	√	√									
DMX Pixel Chasing	24	15	70	5050	RGB	DMX (RS485)	100	8m	10	√	√	√							√	
	24	18	70	5050	RGBW	DMX (RS485)	100	8m	10	√	√	√							√	
	24	15	70	5050	3000K	DMX (RS485)	100	8m	10	√	√	√							√	
	24	12	56	5050	DW	DMX (RS485)	100	8m	10	√	√	√							√	

**Mono Includes:** 2200K, 2500K, 2700K, 3000K, 3500K, 4000K, 5000K, 5700K, 6500K, Red, Blue, Green, Amber, Lemon Yellow, Orange, Pink.

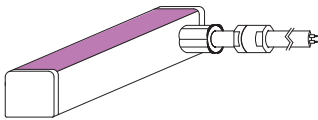
**CV:** Constant Voltage    **DW:** Dual White (Tuneable White)    **IC:** Built In Constant Current IC



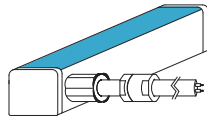
Tightest Bend Radius (mm)								
LDNF300	LDNF310	LDNF320	LDNF330	LDNF340	LDNF350	LDNF360	LDNF370	LDNF380
80	80	120	150	80	80	150	150	120

## Connection Types

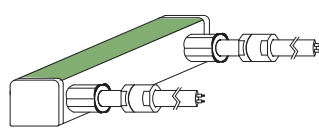
Side Connection Right



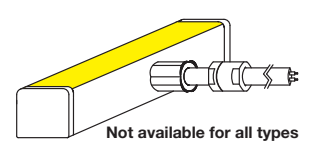
Side Connection Left



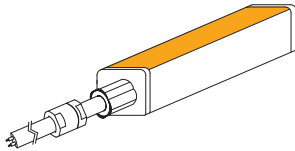
Side Connection Both Ends



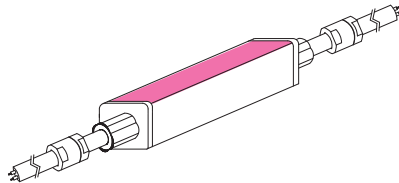
Middle Connection



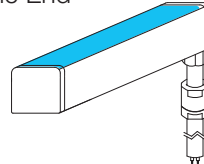
Direct Connection One End



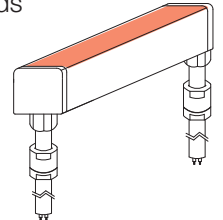
Direct Connection Both Ends



Bottom Connection One End



Bottom Connection Both Ends



In the diagrams above the coloured face represents the light emitting face of the neon flex.

When specifying end connection types specify left, right, bottom as if viewing towards the light emitting face.

## Cable Connection Options



IP68 Connector  
2 Core  
Single Colour



IP68 Connector  
3 Core  
Tuneable White  
DMX  
SPI



IP68 Connector  
4 Core  
RGB



IP68 Connector  
5 Core  
RGBW

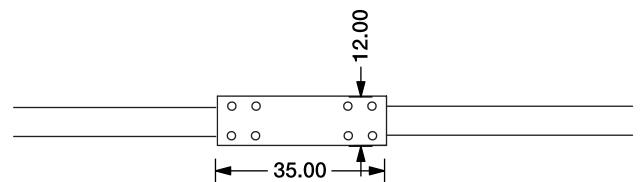


Bare Cables  
2 Core  
3 Core  
4 Core  
5 Core

Moulded cable entries that come with an IP68 Connector have 300mm tails as standard.

### Anti syphon device

Moulded cable entries that come with bare cable ends have 600mm tails plus an anti syphon device as standard. Longer tails available on request.



## Cable Joiners



2 Pin IP68



3 Pin IP68

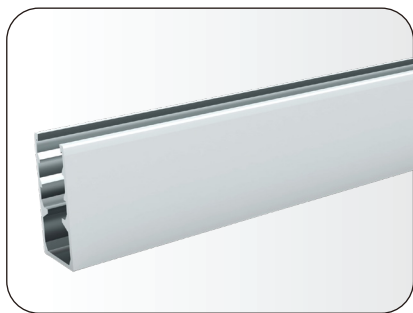


4 Pin IP68

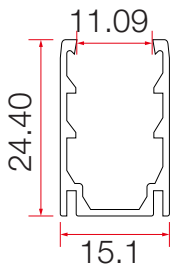


5 Pin IP68

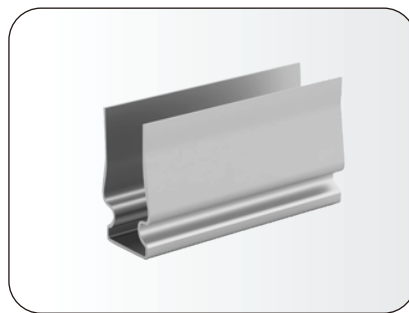
## Profile Options LDNF300/310



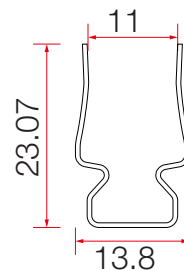
CODE: LDNF300PB



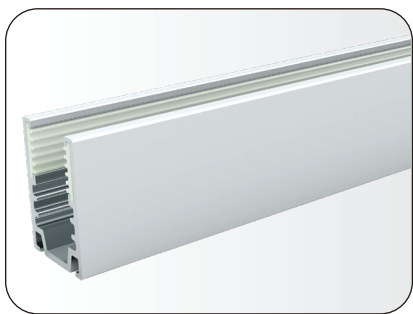
Lengths: 3.5/100/200cm  
Material: Aluminum Alloy  
Colour: Anodised Silver  
Type: Standard



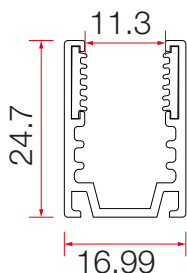
CODE: LDNF300PA



Lengths: 5cm  
Material: Stainless Steel  
Colour: Natural  
Type: 316 Stainless Steel



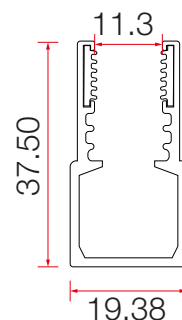
CODE: LDNF300PD



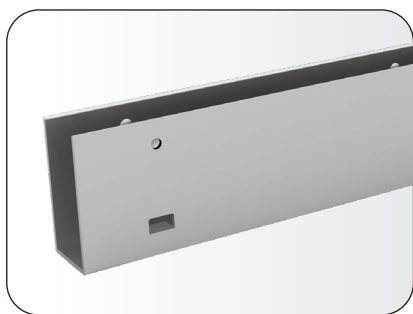
Lengths: 3.5/100/200cm  
Material: Aluminum Alloy  
Colour: Silver  
Type: Anti-drop



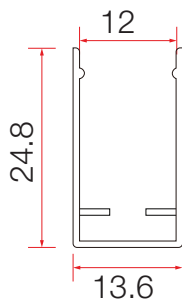
CODE: LDNF300PC



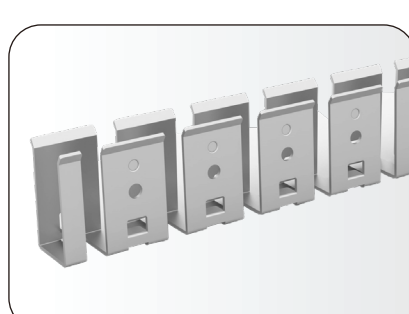
Lengths: 3.5/100/200cm  
Material: Aluminum Alloy  
Colour: Silver  
Type: Cable hiding & Anti-drop



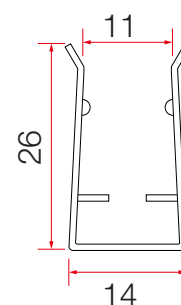
CODE: LDNF300PL



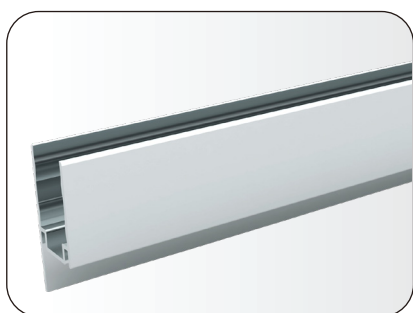
Available length: 100cm  
Material: Stainless Steel  
Colour: Natural  
Type: 316 stainless steel



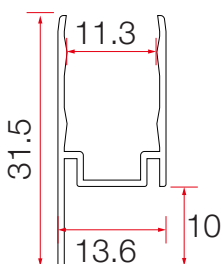
CODE: LDNF300PF



Lengths: 10/30/50/100cm  
Material: Stainless Steel  
Surface treatment: Polished  
Type: Flexible



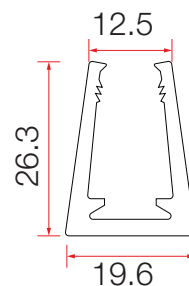
CODE: LDNF300PE



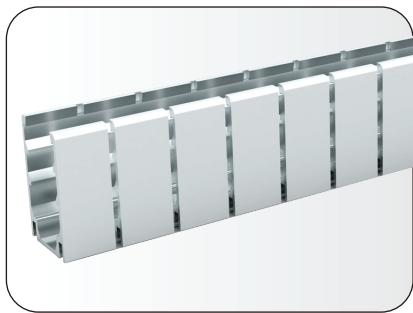
Lengths: 3.5/100/200cm  
Material: Aluminum Alloy  
Colour: Anodised Silver  
Type: Standard



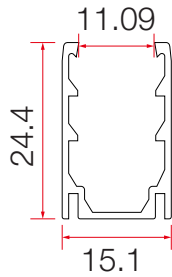
CODE: LDNF300PG



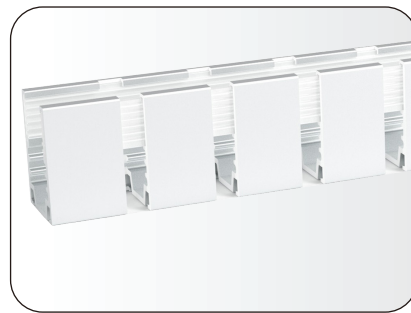
Lengths: 3.5/100cm  
Material: Plastic  
Colour: Clear  
Type: Standard



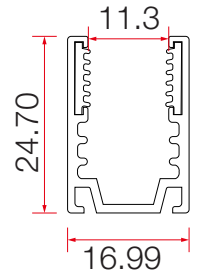
CODE: LDNF300PFV2



Lengths: 50/100/200cm  
Material: Aluminum Alloy  
Colour: Anodised Silver  
Type: Flexible

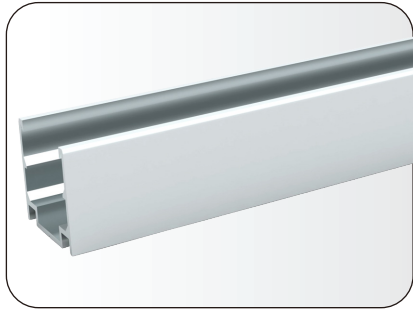


CODE: LDNF300PFV3

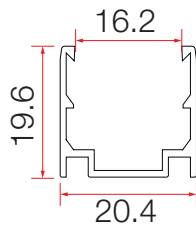


Lengths: 50/100/200cm  
Material: Aluminum Alloy  
Colour: Silver + milky white  
Type: Flexible

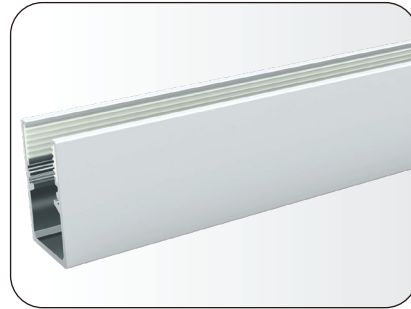
## Profile Options LDNF320/330



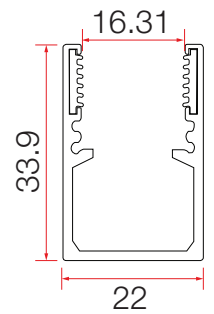
CODE: LDNF320PB



Available lengths: 3.5/100/200cm  
Material: Aluminum Alloy  
Colour: Anodised Silver  
Type: Standard



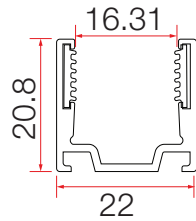
CODE: LDNF320PC



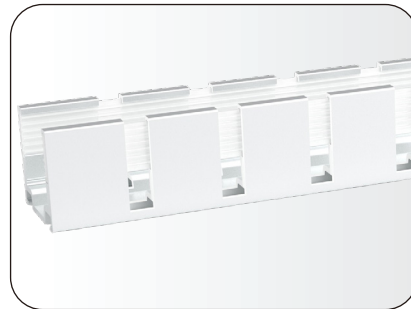
Available length: 3.5/100/200cm  
Material: Aluminium Alloy  
Colour: Silver  
Type: Anit-drop / Cable Hiding



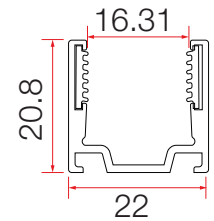
CODE: LDNF320PD



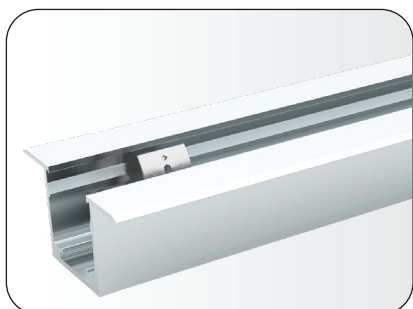
Available lengths: 3.5/100/200cm  
Material: Aluminum Alloy  
Colour: Silver  
Type: Anti-drop



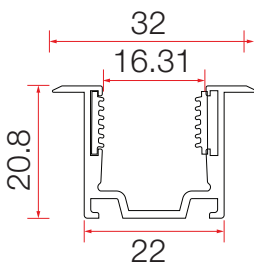
CODE: LDNF320PDF



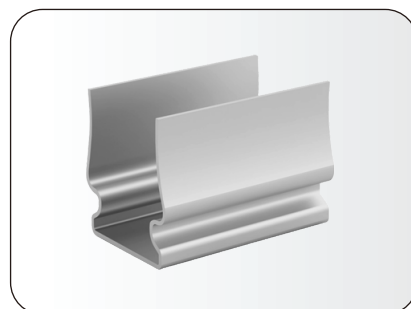
Available lengths: 50/100/200cm  
Material: Aluminium Alloy  
Colour: Silver + milky white  
Type: Flexible



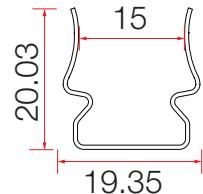
CODE: LDNF320PR



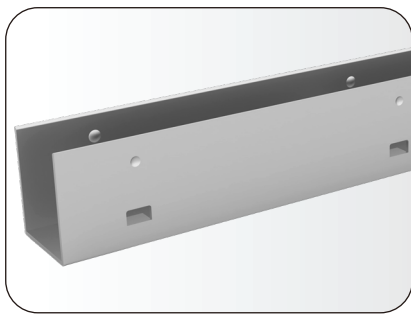
Available length: 3.5/100/200cm  
Material: Aluminium Alloy  
Colour: Silver  
Type: Recessed



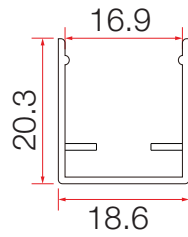
CODE: LDNF320PA



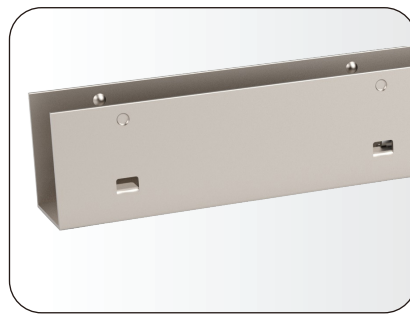
Available lengths: 5cm  
Material: 316 Stainless Steel  
Colour: Natural  
Type: Standard



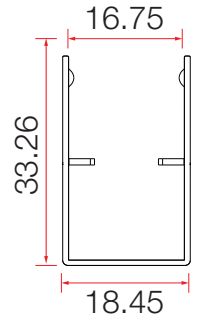
CODE: LDNF320PI



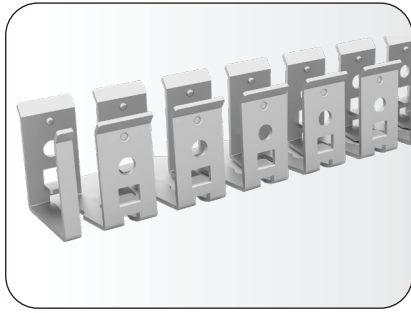
Available lengths: 100cm  
Material: 316 Stainless Steel  
Colour: Natural  
Type: Standard



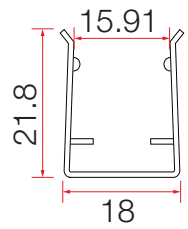
CODE: LDNF320PIC



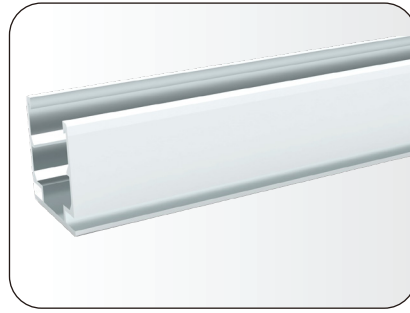
Available lengths: 100cm  
Material: 316 Stainless Steel  
Colour: Natural  
Type: Cable hiding



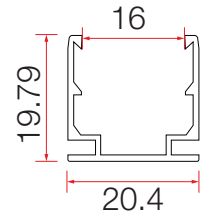
CODE: LDNF320PF



Available lengths: 10/30/50/100cm  
Material: Stainless Steel  
Surface treatment: Polished  
Type: Flexible



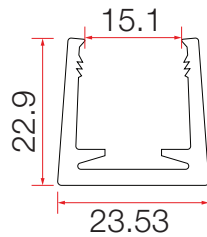
CODE: LDNF320PJ



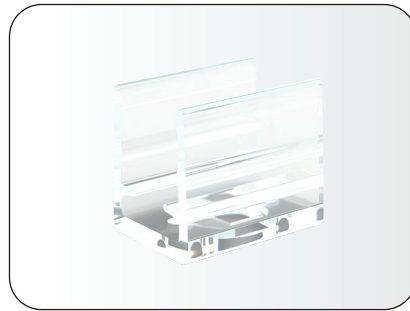
Available length: 50/100/200cm  
Material: Aluminium Alloy  
Colour: Silver  
Type: Flexible



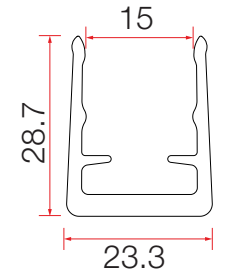
CODE: LDNF320PG



Available length: 100cm  
Material: Plastic  
Colour: Clear  
Type: Standard

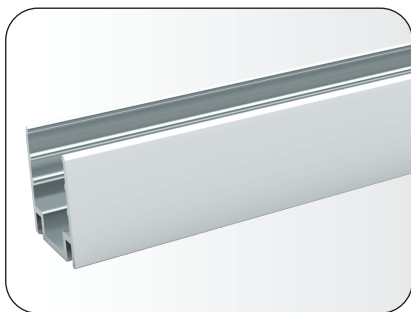


CODE: LDNF320PGC

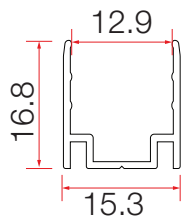


Available lengths: 3cm  
Material: Plastic  
Colour: Clear  
Type: Standard

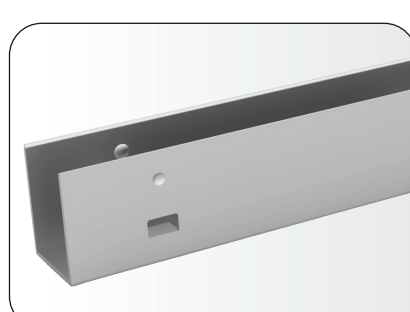
## Profile Options LDNF340



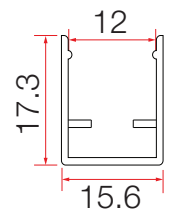
CODE: LDNF340PB



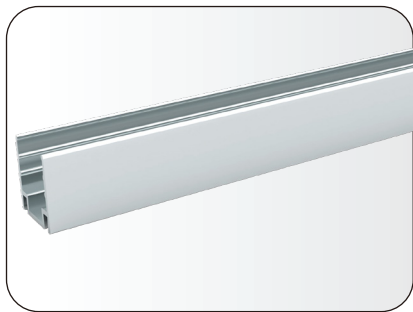
Available length: 3.5/100/200cm  
Material: Aluminium Alloy  
Colour: Anodised Silver  
Type: Standard



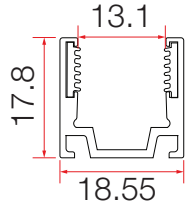
CODE: LDNF340PI



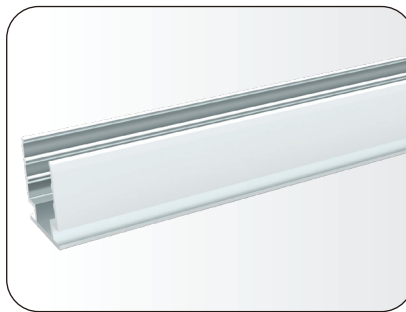
Available length: 100cm  
Material: Stainless Steel  
Colour: Natural  
Type: 316 Stainless Steel



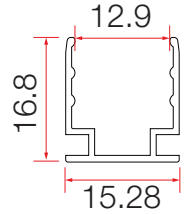
CODE: LDNF340PD



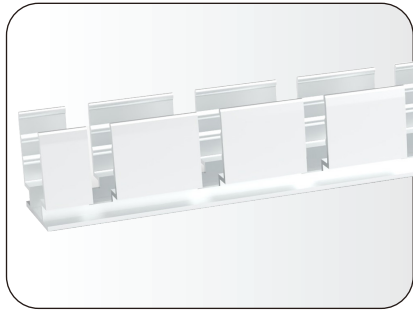
Available lengths: 3.5/100/200cm  
 Material: Aluminum Alloy  
 Colour: Anodised Silver  
 Type: Anti-drop



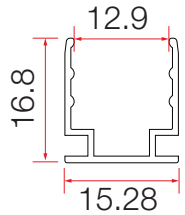
CODE: LDNF340PJ



Available lengths: 3.5/100/200cm  
 Material: Aluminum Alloy  
 Colour: Silver  
 Type: Standard

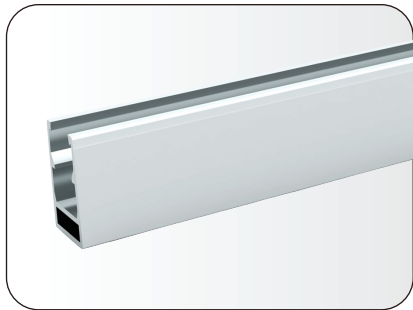


CODE: LDNF340PJF

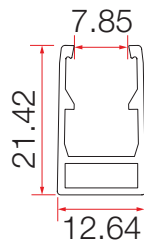


Available lengths: 50/100/200cm  
 Material: Aluminum Alloy  
 Colour: Anodised Silver  
 Type: Flexible

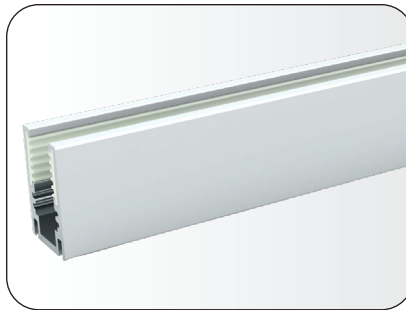
## Profile Options LDNF350



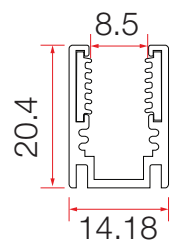
CODE: LDNF350PB



Available length: 3.5/100/200cm  
 Material: Aluminium Alloy  
 Colour: Silver  
 Type: Standard

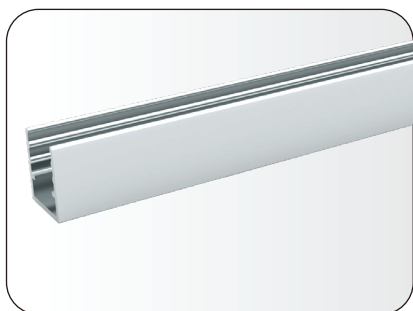


CODE: LDNF350PD

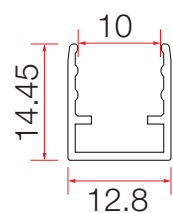


Available lengths: 3.5/100/200cm  
 Material: Aluminium Alloy  
 Colour: Silver  
 Type: Anit-drop

## Profile Options LDNF360/370



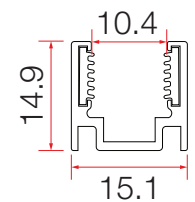
CODE: LDNF360PB



Available lengths: 3.5/100/200cm  
 Material: Aluminum Alloy  
 Colour: Anodised Silver  
 Type: Standard



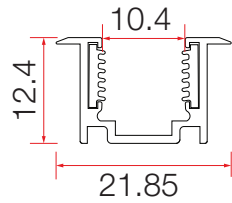
CODE: LDNF360PD



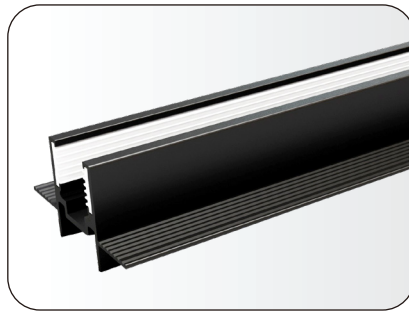
Available lengths: 3.5/100/200cm  
 Material: Aluminum Alloy  
 Colour: Silver  
 Type: Anti-drop



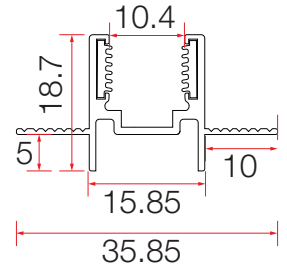
CODE: LDNF360PR



Available length: 3.5/100/200cm  
Material: Aluminium Alloy  
Colour: Silver  
Type: Recessed



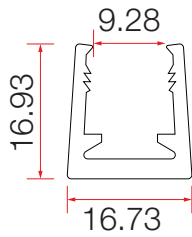
CODE: LDNF360PR2



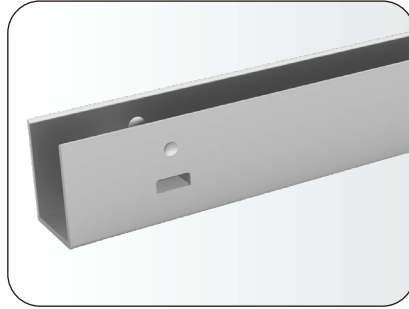
Available length: 3.5/100/200cm  
Material: Aluminium Alloy  
Colour: Black  
Type: Recessed



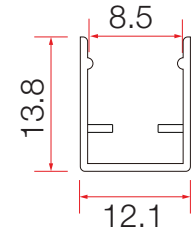
CODE: LDNF360PG



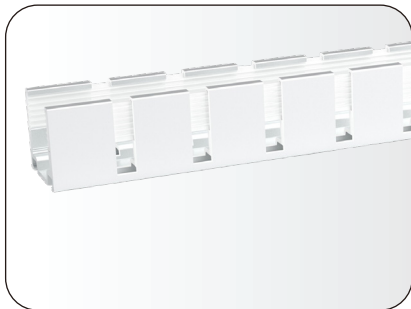
Available length: 100cm  
Material: Plastic  
Colour: Clear  
Type: Standard



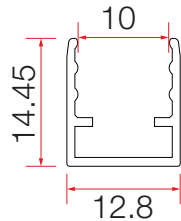
CODE: LDNF360PI



Available lengths: 100cm  
Material: 316 Stainless Steel  
Colour: Natural  
Type: Standard



CODE: LDNF360PF



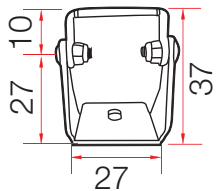
Available length: 50/100/200cm  
Material: Aluminium Alloy  
Colour: Anodised Silver  
Type: Flexible



**Suitable with all profiles**

Material: Aluminium Alloy  
Colour: Anodised Silver  
Type: Angle Brackets

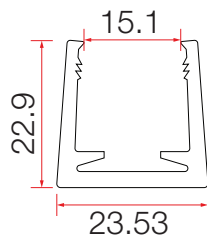
CODE: LDNF300AB



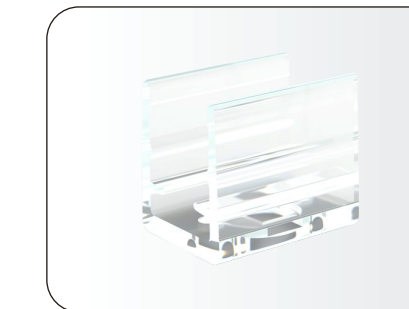
## Profile Options LDNF380



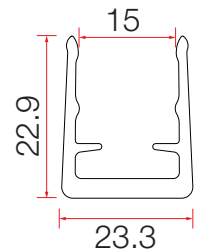
CODE: LDNF380PG



Available lengths: 3.5/100cm  
Material: Plastic  
Colour: Clear  
Type: Standard



CODE: LDNF380PGC



Available lengths: 3cm  
Material: Plastic  
Colour: Clear  
Type: Standard



# Lumen/m

Series	Volts	LED Type	LEDs /m	W/m	Lumen/m													
					2200K	2700K	3000K	3500K	4000K	5000K	6500K	Red	Green	Blue	Lemon Yellow	Amber	Orange	Pink
LDNF300	12	3528	72	5	112	118	142	112	136	115	116	32	80	19	---	48	35	60
	24	5050	72	13	350	395	364	416	419	350	360	---	366	34	---	---	---	180
	24	5050	84	15	600	620	640	650	660	680	690	---	550	65	420	---	---	290
	24	5050	60	12	280	340	340	340	360	370	320	---	253	29	430	---	---	92
	24	5050	60	7.2	---	---	---	---	---	---	---	116	---	---	---	57	22	---
	24	3528	72	5	127	130	130	130	130	150	160	45	119	20	---	37	35	53
	24	2835	72	10	240	248	235	256	272	285	301	---	260	30	250	---	---	150
	48	5050	60	10	435	435	460	460	460	470	470	---	313	44	300	---	---	180
LDNF310	12	3528	72	5	101	121	140	106	135	110	107	45	70	17	---	40	32	48
	24	5050	72	13	355	373	363	390	315	360	378	---	300	30	260	---	--	140
	24	5050	60	12	227	230	243	285	305	334	323	---	264	31	437	---	--	95
	24	5050	60	7.2	---	---	---	---	---	---	---	101	---	---	---	50	21	---
	24	3528	72	5	123	124	149	130	136	170	175	42	115	19	---	34	32	48
	24	3528	72	10	230	235	314	239	258	270	283	---	241	35	---	---	---	120
	36	5050	84	15	390	400	417	420	430	450	455	---	360	35	420	---	---	100
	48	5050	60	10	380	384	408	413	420	440	445	---	290	41	450	---	---	110
LDNF320	24	3528	120	9	180	300	330	403	380	400	465	108	369	33	---	91	70	134
	24	3528	144	10	358	421	425	447	467	496	539	109	338	53	---	110	292	178
	24	3528	120	10	360	380	400	430	454	450	440	---	360	43	---	---	---	150
	24	2835	120	10	450	482	500	520	540	520	502	177	390	75	---	120	---	150
	24	5050	72	13	520	535	540	550	565	575	580	---	430	50	280	---	---	160
	24	5050	84	15	980	1010	1060	1080	1100	1140	1150	---	950	97	1189	---	---	480
	48	3528	140	9	480	490	518	525	530	550	560	---	400	65	---	---	---	190
LDNF330	24	2835	120	10	490	496	347	344	365	355	352	115	300	51	---	---	---	---
LDNF340	24	2835	144	10	430	435	450	432	440	430	442	175	529	72	---	---	---	---
LDNF350	24	2835	70	5	105	115	155	132	120	140	150	45	140	17	---	---	---	---
	24	2835	120	10	200	205	210	220	225	240	245	55	200	25	110	40	60	70
	48	2835	84	5	150	150	170	170	180	190	190	---	200	35	90	---	---	55
LDNF360	24	2835	120	10	440	454	500	510	522	505	498	160	532	76	---	---	---	---
LDNF370	24	2835	120	10	440	458	461	520	519	450	431	152	536	71	---	---	---	---
LDNF380	24	3528	120	9	228	421	497	602	536	530	553	129	436	39	---	109	335	161
	24	3528	144	10	399	481	400	457	670	410	493	133	399	61	---	137	358	216
	24	2835	120	10	540	550	584	656	548	600	612	212	440	45	---	90	---	---

## Examples

LDNF310-48V-5050-60-CV-RGB

LDNF380-24V-3528-120-CV-Blue

LDNF300-24V-5050-70-DMX-RGBW



Mono Colours



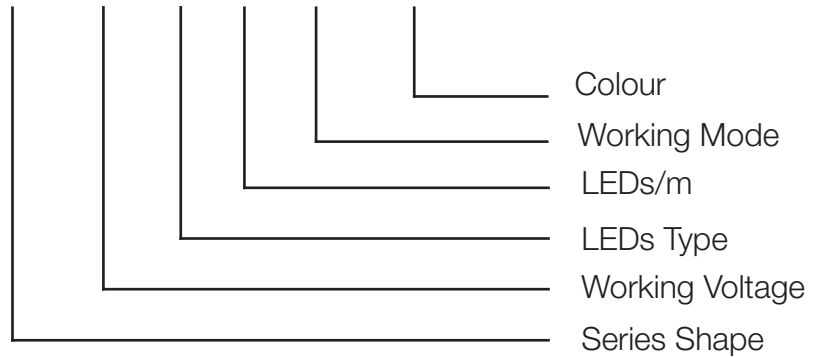
Dual White



RGB & RGBW



Pixel Chasing



When ordering specify the mounting profile type and the cable entry style.

Cable entries are factory moulded to be IP68 and come standard with a 600mm tail.

Longer tails can be specified and are encouraged to avoid making field joins which can be a source of water entry.