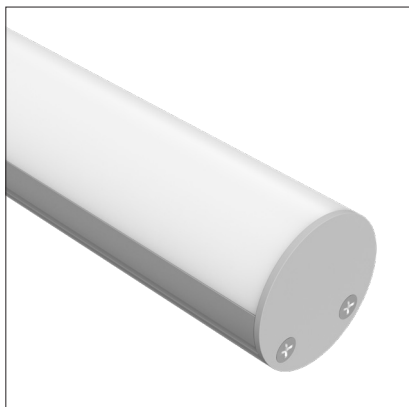


LEDCHAN490

Round Suspended/Bracket Mount Profile



Features

- Suspended pendant style
- Max 4m lengths or cut to size
- 24mm diameter
- Suitable with strips up to 28W/m
- Aluminium body provides heat sinking for LED strips
- Dot-free illumination with appropriate strips
- Silver anodised
- 6063 Structural grade aluminium
- PMMA lens (type of acrylic) interior use
- Self leveling suspension brackets or can be set to illuminate or highlight walls using mounting brackets

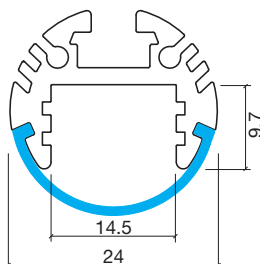
Applications

- Over reception areas/desks
- Retail display lighting
- Over kitchen benches
- Over work desks
- Over dining tables

Note

- Minimum of 2 suspension kits recommended
- Requires a remote driver

Dimensions



Product Codes

| Finish | Code |
|------------------------------|---|
| Silver anodised | LEDCHAN490OL (opal lens) |
| Accessories | |
| Silver end cap without hole | LEDCHAN490EC1 |
| Silver end cap with hole | LEDCHAN490EC2 |
| Silver tilt mount bracket | LEDCHAN490TM |
| Grommet for rear cable entry | GROMMETS |
| Suspension Kits | LEDCHANSK1.2M (1.2m drop) LEDCHANSK2.5M (2.5m drop) LEDCHANSK5M (5m drop) |

While every effort has been made to ensure the accuracy of all information provided Task Lighting can not be held responsible for any errors. Task Lighting also reserves the right to modify/delete product details without notice.