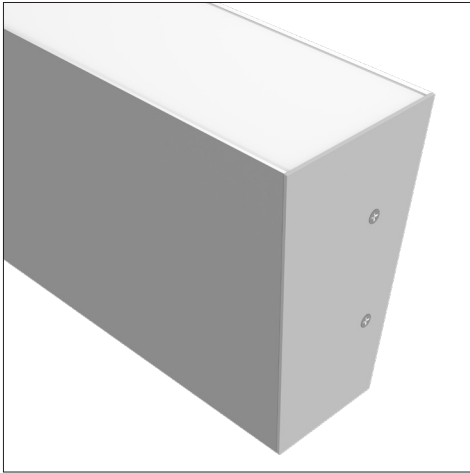


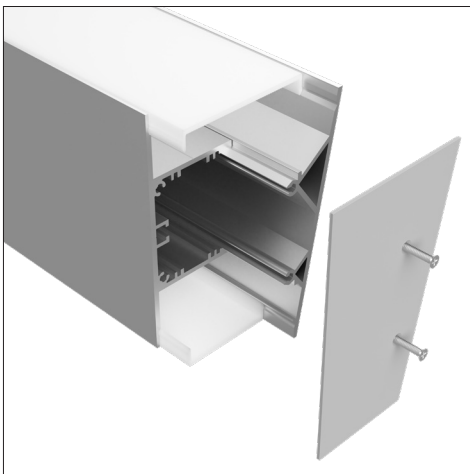
LEDCHAN570

Large Wall Mount Up/Down Washer



Features

- Accommodates two rows of high power strips (up/down)
- Max 4m lengths or cut to size
- W51mm x H83mm
- Suitable for all Task strips up to 30W/m
- Aluminium body provides heat sinking for LED strips
- Dot-free illumination with all Task strips
- Silver anodised
- 6063 Structural grade aluminium
- PMMA lens (type of acrylic) interior use
- Can be fitted with individual dimmers for up & down



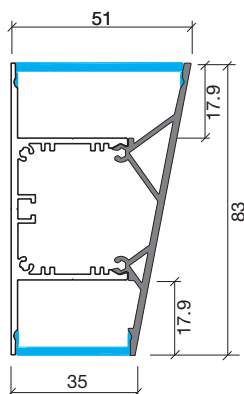
Applications

- Direct to wall mount or wall mount brackets
- All wall wash applications up/down
- General lighting with high power strips

Note

- Counter sunk screw fixing through the profile base to wall mount or use standoff wall mount brackets
- Requires a remote driver
- Dimming options available

Dimensions



Product Codes

Finish	Code
Silver anodised	LEDCHAN570OL (opal lens)
Accessories	
Silver end cap Left	LEDCHAN570EC1
Silver end cap Right	LEDCHAN570EC2
Grommet for rear cable entry	GROMMETS
Stand off wall bracket	LEDCHANWB

While every effort has been made to ensure the accuracy of all information provided Task Lighting can not be held responsible for any errors. Task Lighting also reserves the right to modify/delete product details without notice.