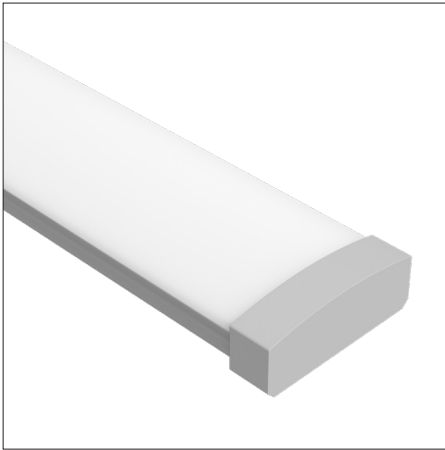


LEDCHAN690

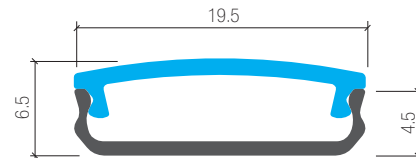
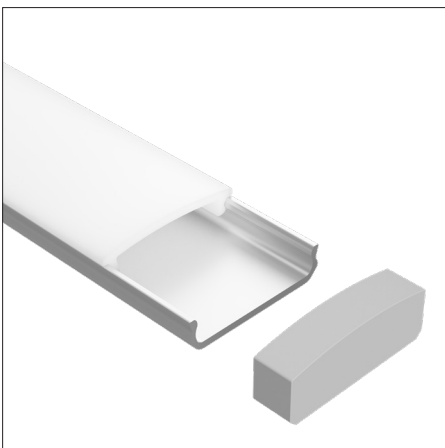
Super Slim Bendable Profile



Features

- Simple clip fixing
- Max 2.5m lengths or cut to size
- W19.5mm x H6.5mm
- Suitable with interior strips up to 15W/m & 19.2w/m RGBW
- Aluminium body provides heat sinking for LED strips
- Dot-free illumination with appropriate strips
- Silver anodised
- 6063 Structural grade aluminium
- PMMA lens (type of acrylic) interior use
- Shallow strip mounting position gives a wide distribution

Dimensions



Applications

- Wall surface mounted
- Up or down lighting when wall mounted
- Retail display lighting
- General lighting with high power strips

Note

We recommend trimming the ends after bending this profile as the lens and profile ends will not match due to the slight change in bend diameter of the profile versus the lens.

Product Codes

Finish	Code
Silver anodised	LEDCHAN690OL (opal lens)
Accessories	
Silver end cap without hole	LEDCHAN690EC1
Silver end cap with hole	LEDCHAN690EC2
Mounting clip	LEDCHANMC5

While every effort has been made to ensure the accuracy of all information provided Task Lighting can not be held responsible for any errors. Task Lighting also reserves the right to modify/delete product details without notice.