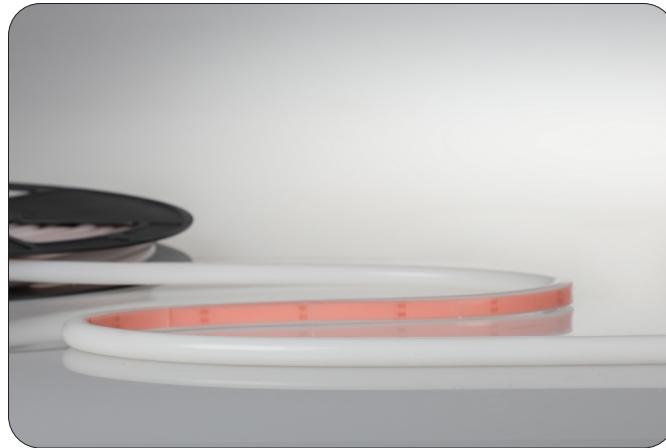


## LDNF200 LED Neon Flex

### RGB/RGBW



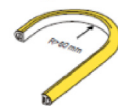
The LDNF200 LED Neon Flex features dot-free lighting, high efficacy and high CRI which is designed to provide consistent linear lighting for a wide variety of applications for cove lighting and indirect lighting in hotels, restaurants, shops, offices, and homes.

### Features

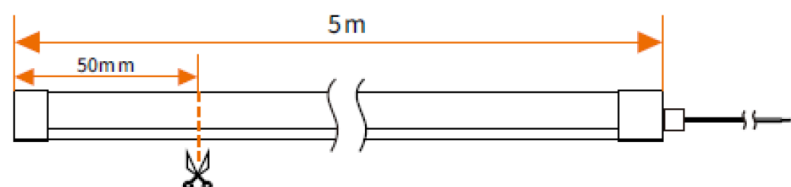
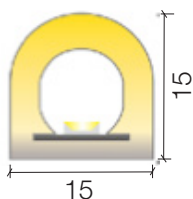
- 15x15mm, dome design, viewing angle 180°
- Silicone sleeve type, IP65
- Top / Vertical bending
- Dimmable with suitable control system



Top View/Vertical Bending



### Dimensions



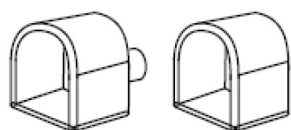
## Technical Data

Product Code	LDNF200RGB24	LDNF200RGBW24
Colour/CCT	RGB	RGBW
Watts/m	15W/m	
Voltage	24VDC	
LED type	5050 SMD	
LEDs/m	120	
CCT/wavelength	-	W=6000K
Lumen output	520 Lm/m	600~735 Lm/m
Cut points	50 mm	
Max Run (single feed)	6m	
CRI (White)	-	Ra 90+
Operating temp (Tc)	-25 ~ 70°C	
Storage temp. (Ts)	-30 ~ 80°C	
Ambient temp. (Ta)	-25 ~ 45°C	
Expected Lifespan	30,000Hrs	

## Mechanical Technical Data

Dimension	15x15mm	Bending direction	Top bending / Vertical
IP rating (optional)	IP65	Connection	0.5MM2 4/5 Core bare cable
Beam angle	180°	Material of sleeving	Silicone
Bend radius	R>60mm	Installation	VHB adhesive tape / Clips / Channel
Dimming function	PWM (with suitable controller)	UV Stable	Yes

## Accessories



Silicone end caps  
(Sealed by TASK)



Code: LEDCHANMC2  
(Mounting Clips for RGB/RGBW)

While every effort has been made to ensure the accuracy of all information provided Task Lighting can not be held responsible for any errors.  
Task Lighting also reserves the right to modify/delete product details without notice.