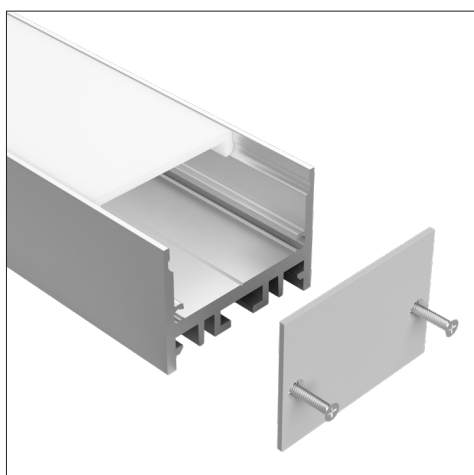
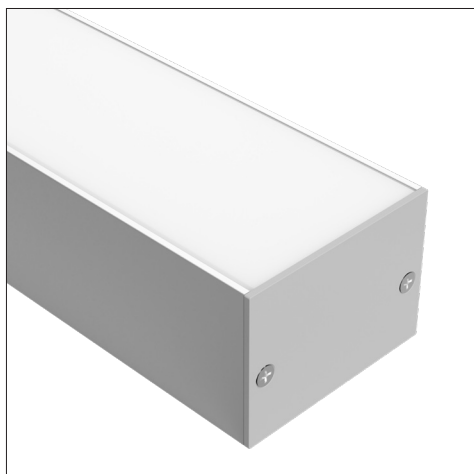


LEDCHAN590

Large Linear Surface Mount



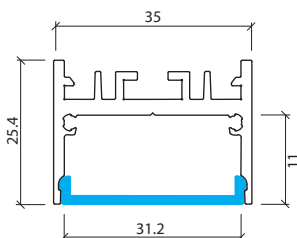
Features

- Simple screw or clip fixing
- Max 4m lengths or cut to size
- W35mm x H25.4mm
- Suitable for all Task strips up to 30W/m
- Aluminium body provides heat sinking for LED strips
- Dot-free illumination with appropriate strips
- Silver anodised
- 6063 Structural grade aluminium
- PMMA lens (type of acrylic) interior use
- Shallow strip mounting position gives a wide distribution coupled with a large aluminium mass making it ideal for use in coves and pelmets when using newer high power LED strips

Applications

- Surface mounted or suspended
- Retail display lighting
- Pelmet & recessed coves
- General lighting with high power strips

Dimensions



Note

- Counter sunk screw fixing through profile base or use mounting clips
- Corner joiners available for simple 90,120deg angles and straight

Product Codes

Finish	Code
Silver anodised	LEDCHAN590OL (opal lens)
	LEDCHAN590FL (frosted lens)
	LEDCHAN590BL (black lens)
Accessories	
Silver end cap without hole	LEDCHAN590EC1
Silver end cap with hole	LEDCHAN590EC2
Silver mounting clip	LEDCHANMC2
Grommet for rear cable entry	GROMMETS
Suspension Kits	LEDCHANSK1.2M (1.2m drop)
	LEDCHANSK2.5M (2.5m drop)
	LEDCHANSK5M (5m drop)
Joiners	LEDCHANJ180 (180° joiner)
	LEDCHANJ120 (120° joiner)
	LEDCHANJ90 (90° joiner)

While every effort has been made to ensure the accuracy of all information provided Task Lighting can not be held responsible for any errors. Task Lighting also reserves the right to modify/delete product details without notice.