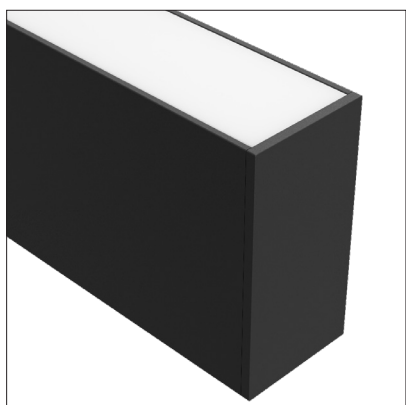
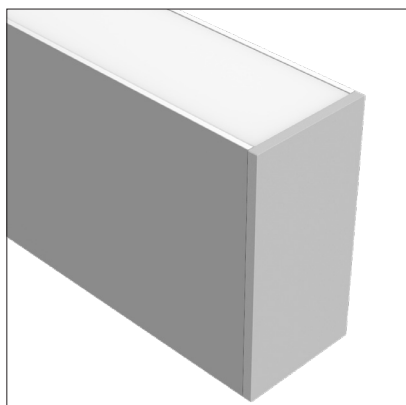


LEDCHAN770

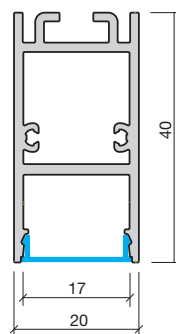
Slimline Pendant or Surface Mount Profile



Features

- Discrete slimline
- Max 4m lengths or cut to size
- W20mm x H40mm
- Suitable for interior & exterior strips up to 20.2W/m
- Aluminium body provides heat sinking for LED strips
- Silver anodised
- 6063 Structural grade aluminium
- PMMA lens (type of acrylic) interior use
- Dot-free illumination with appropriate strips

Dimensions



Applications

- Direct pendant lighting
- Surface mount option
- General lighting with high power strips
- Discrete lighting over benches
- Over reception desks

Note

- Requires a remote driver
- Surface mounted or suspended
- Dimming options available

Product Codes

Finish	Code
Silver anodised	LEDCHAN770OL (opal lens)
	LEDCHAN770FL (frosted lens)
Black powder coated	LEDCHAN770OLBK (opal lens)
	LEDCHAN770FLBK (frosted lens)
Accessories	
Silver screwless end cap	LEDCHAN770ECSL
Black screwless end cap	LEDCHAN770BKECSL
Mounting clip	LEDCHANMC8
Suspension kits	LEDCHANSK1.2M (1.2m drop) LEDCHANSK2.5M (2.5m drop) LEDCHANSK5M (5m drop)
Grommet for rear cable entry	GROMMETS
Joiners	LEDCHANJ120MINI (120° joiner)
	LEDCHANJ180MINI (180° joiner)
	LEDCHANJ90BMINI (90° B version)
	LEDCHANJ90MINI (std 90° joiner)

While every effort has been made to ensure the accuracy of all information provided Task Lighting can not be held responsible for any errors.
Task Lighting also reserves the right to modify/delete product details without notice.